



Chairs Chatter

Hooray! It's beginning to look a lot like Christmas! At last!

Hello and welcome to the December issue of our club newsletter. It was quite difficult to write the last two month's reports; as it all felt like doom, gloom and nothing but bad news. But Christmas came early, the club has been saved, and we are now busy behind the scenes planning for 2018.

Some changes have already been set in motion. For starters, we now have an all new and improved website. Phil Williams has been doing a sterling job revamping our corporate image and updating the website. Hopefully you will all now find it more eye catching and appealing to use. This is all part of plans to try and attract new club members. Phil would very much appreciate your feedback and views on this. So if you could all go and have a good look at the new pages and let us know your thoughts. Just follow this link: www.mswa.co.uk

We are also hoping to make more use of social media. I did set up a Facebook page a good while ago, but it has been lying a little dormant and unloved. We have now linked it direct to the new website and hope to make further improvements. So if you can also go and have a sneaky peek at this too and also let me know your thoughts, comments and feedback etc. Good or bad please! <https://www.facebook.com/midstaffswoodturners/>

The next big step for the club will be our forthcoming AGM. So please make sure you have Friday 12th January 2018 secured in your diaries; and please do come along and give us your much needed support and feedback. We need your ideas, input and competition entries of course! Hopefully you will all be able to grab some spare time over the next two weeks to finish either an off-set candlestick or a decorated hollow form.

In the meantime, may I wish you all a very happy Christmas and best wishes for 2018. I hope you all have a lovely time and I look forward to seeing you again in the New Year!

See you all on Jan 12th 2018!

With very many thanks!

Dawn



Editors Scribblings

Well, this is probably going to be my last “proper” newsletter apart from a January 2018 issue recording the Competition awards and including reports from the AGM. I do hope someone comes forward to take over as Editor; the club has had a regular Newsletter almost continuously since 1994, shortly after the club started, so it would be sad for it not to continue. We don't know yet how the new website being created by our Treasurer Phil Williams will be able to cover the monthly club events and demonstrations – that remains to be sorted out; no doubt Phil will be appealing for text and photographs to include. In the meantime, if we are not able to appoint a new Editor at the AGM, any articles which may be of interest to members can be sent to me and they can then be allocated either to the website or possibly I may produce an occasional “special” Newsletter.

Just a reminder that January sees the final entries for the Challenge Competition and also the once a year Premier Trophy competition. Don't forget that both these are open to all members, novices and more experienced alike. I was privileged to be awarded the Premier Trophy during my first year of woodturning, so if I can do it then anyone can!

Finally, I would like to wish you all a very Happy Christmas and all good things for 2018. I hope to see you at the AGM. Happy turning!

Hugh Field

Ockenden Timber

Starting from January 2018 Ockenden Timber will be trading online only as unfortunately they have been given notice from their landlord to vacate their Woodyard & Shop premises which is going to be re-developed. They have been unable to find a suitable location to both retail and process timber from. All of their products will continue to be available online at competitive prices.

They will be having a shop sale from the 7th to the 21st December during their usual opening times (Tuesdays, Thursdays and Sundays 10am – 3pm). Discounts of up to 40% will be available on all excess stock including timber, tools, accessories and ex-display machinery. Go to www.ockenden-timber.co.uk for more information.

Leaflets including a special offer code to use on their website giving 10% off all online orders placed before January 31st 2018 will be available at our AGM in January 2018. In fact, it appears that entering the code OFFER10 during checkout is all that is required!

Staffordshire Wildlife Trust – Christmas Craft Fayre – 18th 19th November 2017

The Club had a stall at this event which was more successful than some previous events at this venue. Our stand, always the largest at the event, attracted a lot of attention and sales were good, at almost £500 for the weekend, enabling us to make a donation of £80 to the trust. This was assisted by Gerry Marlow having donated the four offset turned candlesticks that he turned at our November demonstration and which we agreed to sell for charity. Two of these were sold raising £30.

Thanks to Jane Russell, Dawn Hopley, Vance Lupton (who kindly loaned his lathe, stand and safety screen, display stands and table cloths), John McElroy, Philip Watts, Phil Williams and Hugh Field for supporting this event. Geoff Payne visited on both days and is recovering well from his stroke; able to drive but not confident yet about resuming turning having yet to regain full sensation in his left hand. Hopefully Geoff will be back at club meetings soon.



Penguins were the most popular item this year! John McElroy brought a large “family” which sold quickly and he had to bring more in on the Sunday.

Christmas themed items also sold well as did “Jumping Jack” puzzles, spinning tops and pendants. A number of pot pourri bowls, ring stands and decorative items and a musical box also found customers. Dawn turned a small lidded box in oak which sold quickly to our neighbouring stall holder.



[Above 3 photographs courtesy of Dawn Hopley]

December Competition

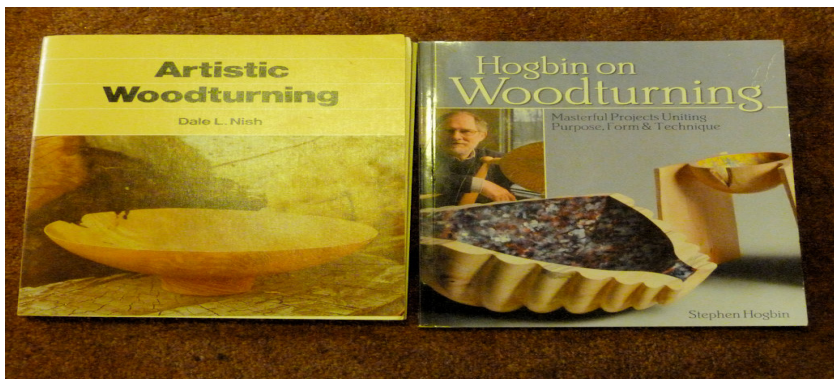
This was the last of the novice competition series for 2017. There were no entries.

December Demonstration – Ted Gill – a reconstructed bowl.

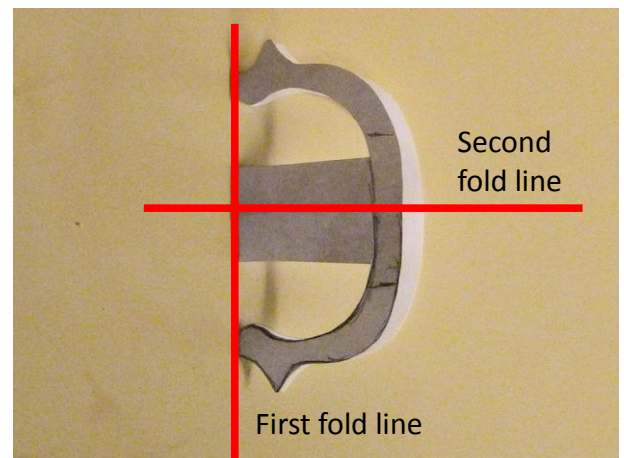
Another demonstration by our own member, Ted Gill.

Ted has produced a number of this type of item whereby a bowl is turned, cut into two or more pieces and then glued together to produce a different form.

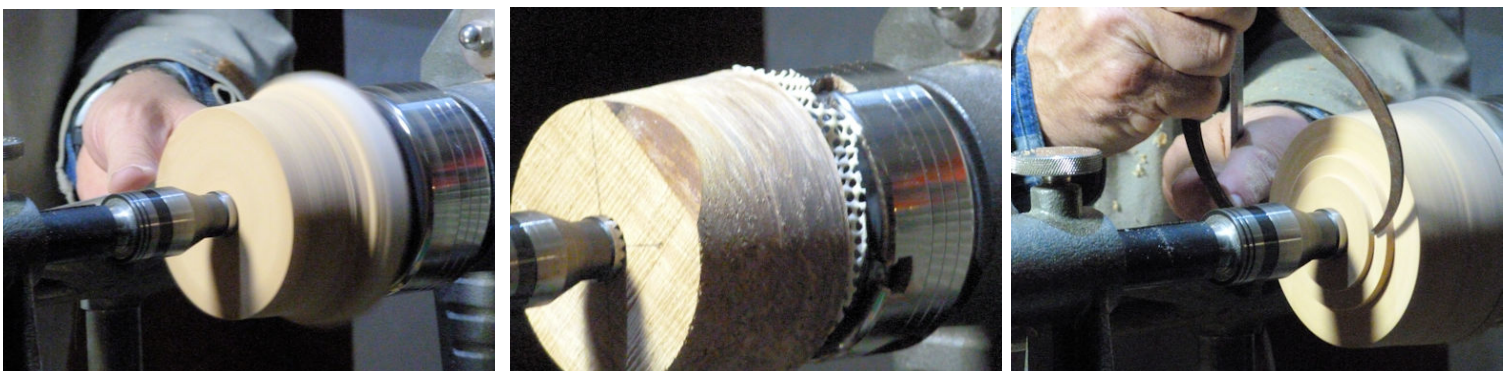
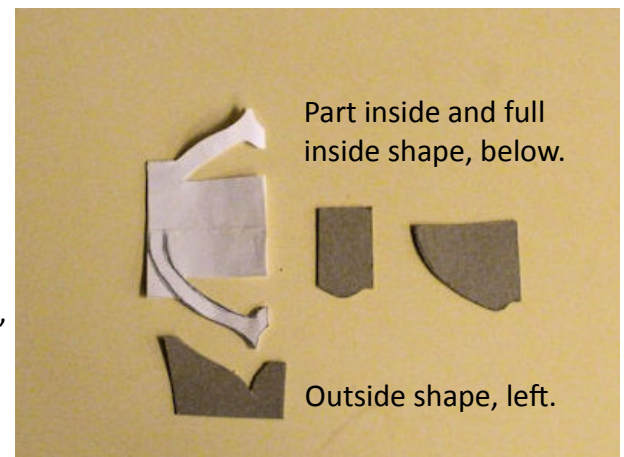
The inspiration initially came from Dale Nish's book, "Artistic Woodturning" where Stephen Hogbin's work was featured and further ideas came from Stephen Hogbin's book (reviewed by Jane Russell in the March 2017 issue of the Newsletter).

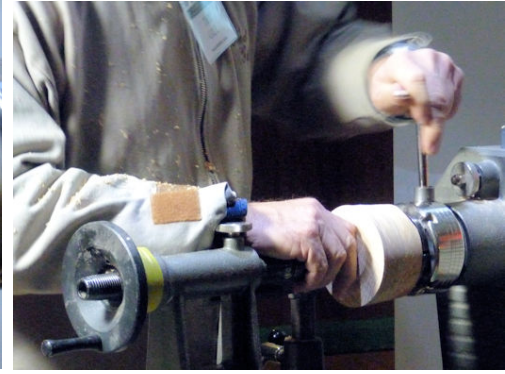
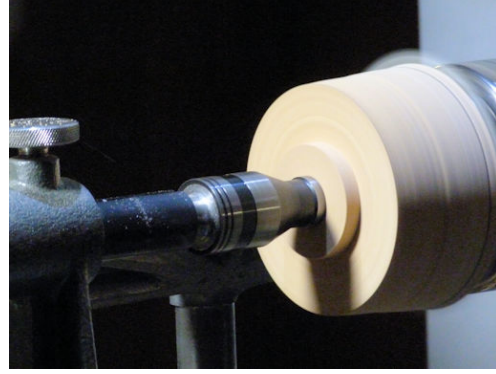


The ability to visualise in three dimensions and a certain amount of planning will contribute to the success of one of these projects and Ted begins by creating a paper template. The proportions can vary (see later!) but in this case Ted had chosen to make the bowl such that it's diameter was twice its height. This meant that the template began as a square which could be folded twice, resulting in a quarter size square on which the shape could be marked and cut out. From this a set of cardboard templates are made to assist with achieving the correct final shape.

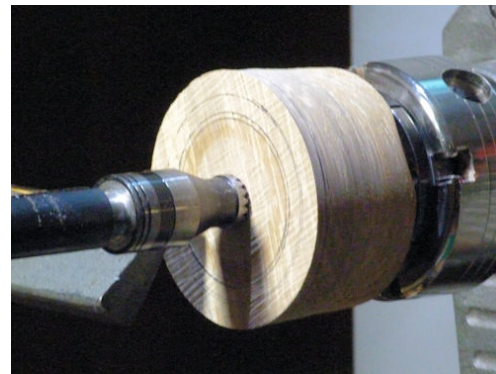


The chosen wood was fairly green spalted whitebeam (*Sorbus aria*), felled about 18 months ago, which was mounted using a Steb centre to compress the blank against the chuck with a piece of router mat in between. The blank was roughed down to round using a bowl gouge and a chucking spigot added. The dovetail shape was added using a diamond section parting tool by rotating it to the left slightly. Then the piece was remounted in the chuck for turning and hollowing the bowl.

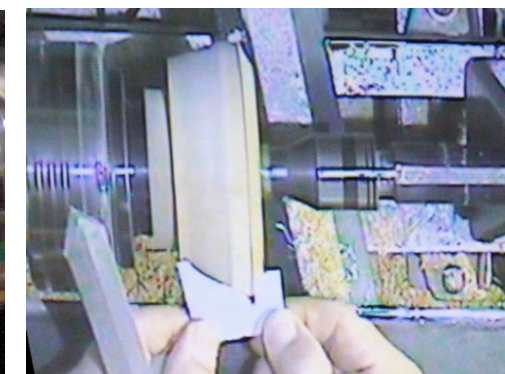
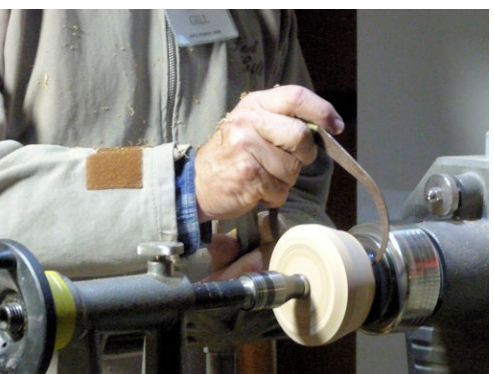




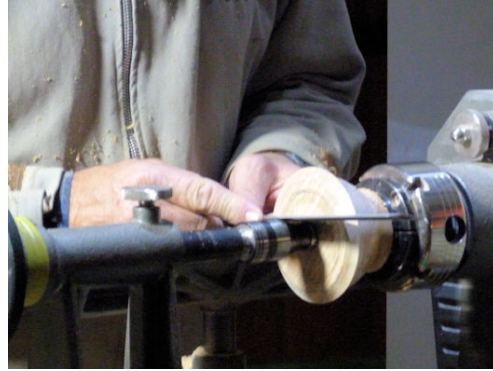
Next, the key diameters and depths were transferred by measurement from the template to the blank in pencil and turning of the outer shape begun.



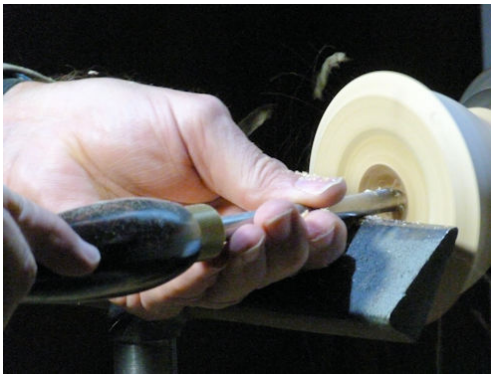
The first feature to be turned was the half cove between the outermost pencilled circle and the first line on the cylindrical surface. Next, the shaping of the bottom of the bowl commenced. A datum point was established where the curve of the outside shape intersected with the waste portion of the template (picture below, left), and a thin parting tool used to transfer this diameter to the piece. The waste wood was removed using a bowl gouge. After further turning the template was used to check the shape.



The face was trued up next. This needs to be truly flat as it will be the joint surface when the bowl is later cut in half and glued together. After this the chuck was checked for tightness prior to commencing the hollowing.



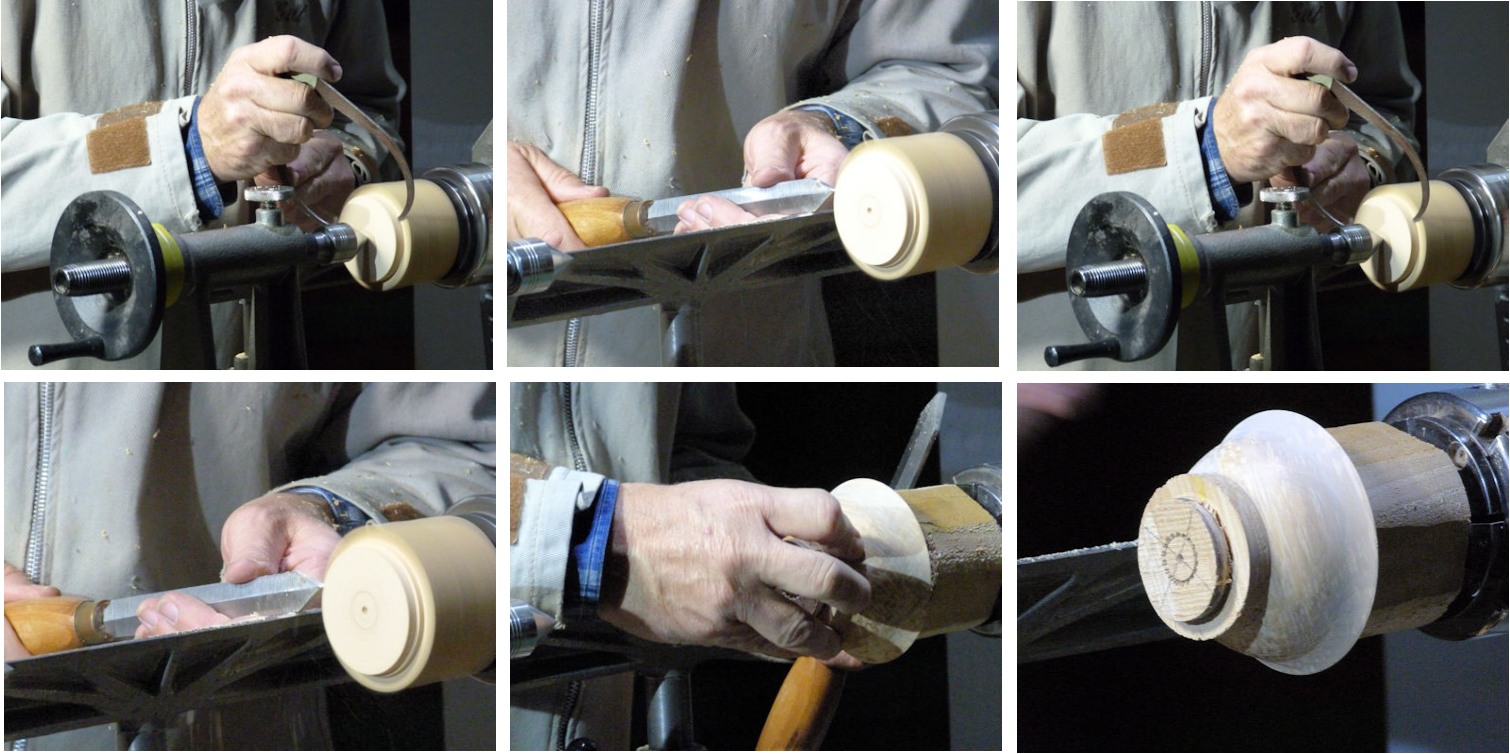
Ted uses 3 different tools for bowl hollowing, starting with a spindle gouge but moving to a bowl gouge and a Simon Hope tungsten carbide tool (which has the circular cutter mounted at 45° to the square shank, so presenting the cutting edge at the optimum angle which produces a shear type cut, use link [Simon Hope carbide](#) for more info) for final shaping and finishing. A narrow parting tool was used to establish the rim width and to provide a stop to preserve the flat rim in the event of the gouge accidentally sliding across the surface. Calipers were used to check the thickness. The internal depth of the bowl was measured and noted.



Simon Hope hollower, also available in a cranked version

For finishing the base of the bowl a block of wood, which already had a chucking spigot, was mounted in the chuck in order to turn a jam chuck.





With support from the tailstock, shaping the bottom of the bowl was begun by taking gentle cuts with a gouge.



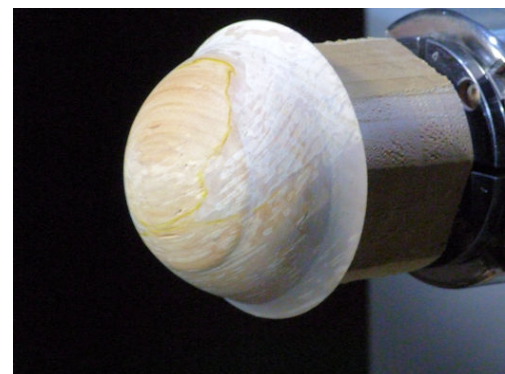
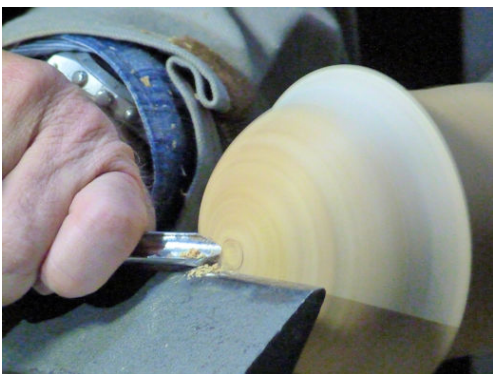
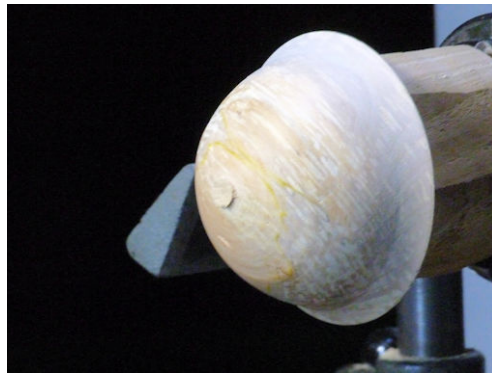
The depth of the bowl was established by adding the thickness to the previously noted internal depth and a cut taken with a thin parting tool. The bulk of the waste was removed with a wider parting tool.



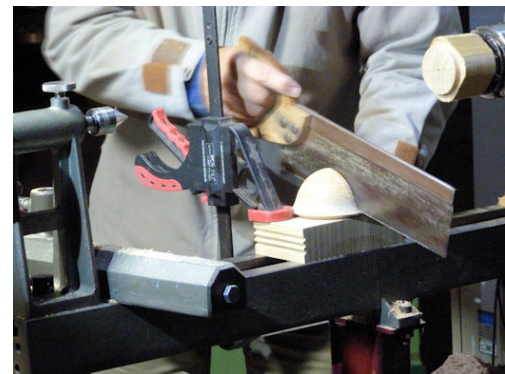
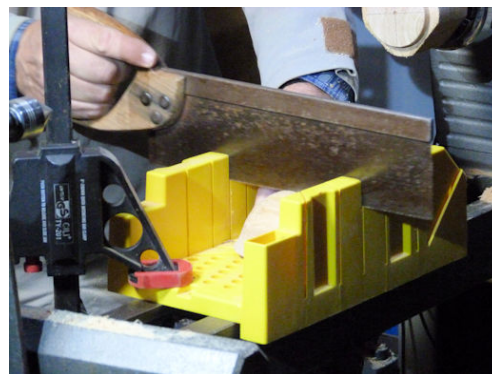
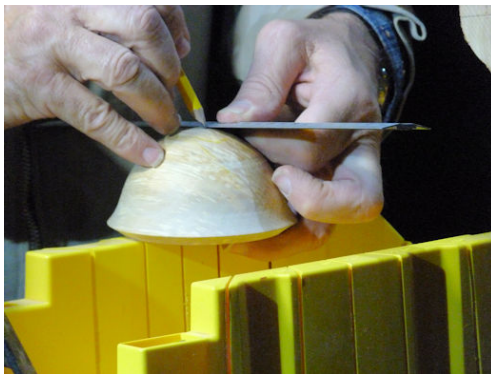
Final shaping was carried out and a slight "bump" sanded out.

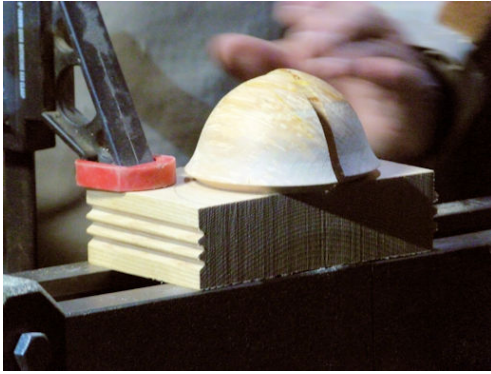


A Japanese pull saw was used to remove the remaining stub and gentle cuts with a gouge removed the remaining waste, followed by sanding.



Cutting the bowl in half was the next stage. Normally this would be carried out on the band-saw using a sled, but for the purpose of this demonstration Ted marked a line across the centre of the bowl and used a mitre-block and tenon saw.



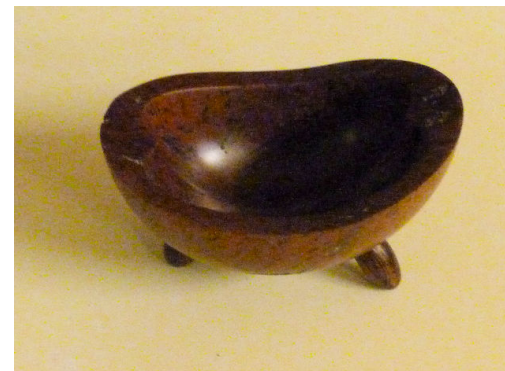
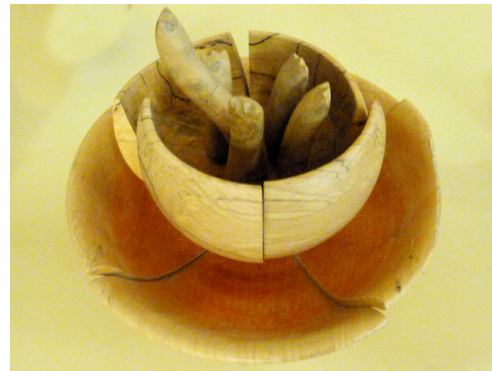


The two parts would next be glued together, carefully clamped and when fully cured the top surface would be finished by carving and sanding as required.



Ted explained that altering the diameter to depth ratio of the bowl will affect the resulting shape when the re-constructed bowl is finished. With the depth equal to half the diameter the end result essentially retains the original proportions of the bowl. Making the diameter larger in proportion makes the re-constructed bowl narrower, and vice versa.

Ted had brought along many examples of other re-constructed bowls he has made:-

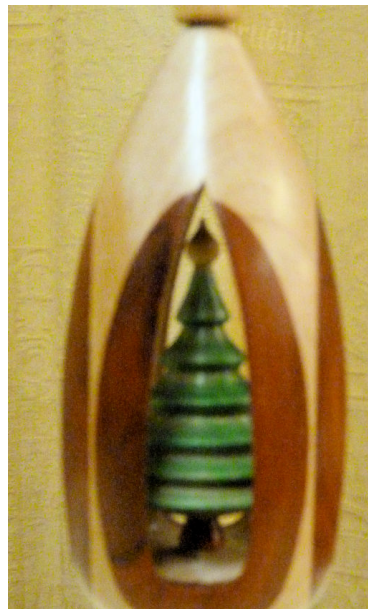
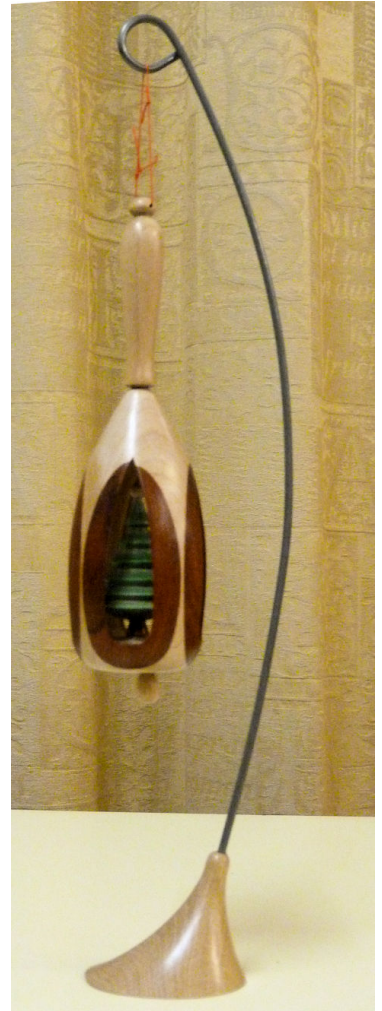


An excellent and interesting demonstration. I hope we can persuade Ted to demonstrate for us again.

Hugh Field

December display table

Ted Gill has been busy!



Forthcoming events

Club Meetings

12th January 2018

A G M

2nd February 2018

Mike Taylor – Coppicer and pole lathe turner

Club Competitions

Challenge (open to all members)

An offset candlestick

Novice

To be advised

Premier (open to all members)

Decorated hollow form

Other events

Saturday 13th January 2018 10am - 4pm

Phil Irons at Axminster Nuneaton. Free event.

He will be spending the day in store demonstrating tools from Woodcut, with whom he has a long association. His main focus will be on the Bowlsaver MAX3 - a tool which will enable you to get an increased output from a piece of wood. Phil will also be using Tru-Grind sharpening jigs and Pro-Forme hollowing tools.

Hints and tips

This section is for any tips or advice you would like to pass on to other members. If you have discovered something you found useful that you think may benefit others, please pass it on.

Members sales items

This section is for listing any turning or woodworking tools or related items you have for sale. Any submissions to editor@mswa.co.uk, please.

DVDs

The club has a selection of Woodturning DVD's for use by registered club members use only. You can borrow them for just £2 per month (some are free)! If any members have DVDs which are not on the list, but which they would like to donate to the Club, they would be most welcome.

See Ron Dixon who has agreed to manage the DVD library.



Abrasives and other items (when available)

Mirka Abranet 70 x 125mm Sheets:

5 x Mixed Grit Pack (120, 180, 240, 400 and 500) = £2.00 per pack

Mirka Abranet 50mm Sanding Discs:

7 x Mixed Grit pack (80, 120, 180, 240, 320, 400, 600) = £1.50 per pack

Rhinogrip 50mm Sanding Discs:

7 x Mixed Grit pack (80, 120, 180, 240, 320, 400, 600) = £0.90 per pack

Flexipad Sanding Pads (for above discs):

50mm Velcro Conical Spindle Pad with 6mm shaft = £8.82 each

J-Flex Sanding Paper:

5 x 1m lengths mixed grits 120, 180, 240, 320 & 400 = £9.50 per pack

Donations of items for sale to add to club funds are always welcome.



Club information

Your club committee for 2017 is:-

Chairman – Dawn Hopley

Tel: 07860 501 379

chairman@mswa.co.uk

Secretary – John McElroy

secretary@mswa.co.uk

Treasurer – Phil Williams

treasurer@mswa.co.uk

Assistant Treasurer - Vacant

Events Secretary – Vacant

events@mswa.co.uk

Newsletter editor – Hugh Field

Tel: 0121 329 2911

editor@mswa.co.uk

Webmanager – Philip Watts

webman@mswa.co.uk

Health and Safety Advisor

Hugh Field

health.safety@mswa.co.uk

Other important people responsible for:-

Refreshments: David Neal, David Dawes & Ron Dixon

Equipment: Mark Pickering & John Meers

Cameras: John Meers, Ted Gill, Vance Lupton & Dawn Hopley

Club shop: Ron Dixon

Please use phone numbers only if absolutely necessary.